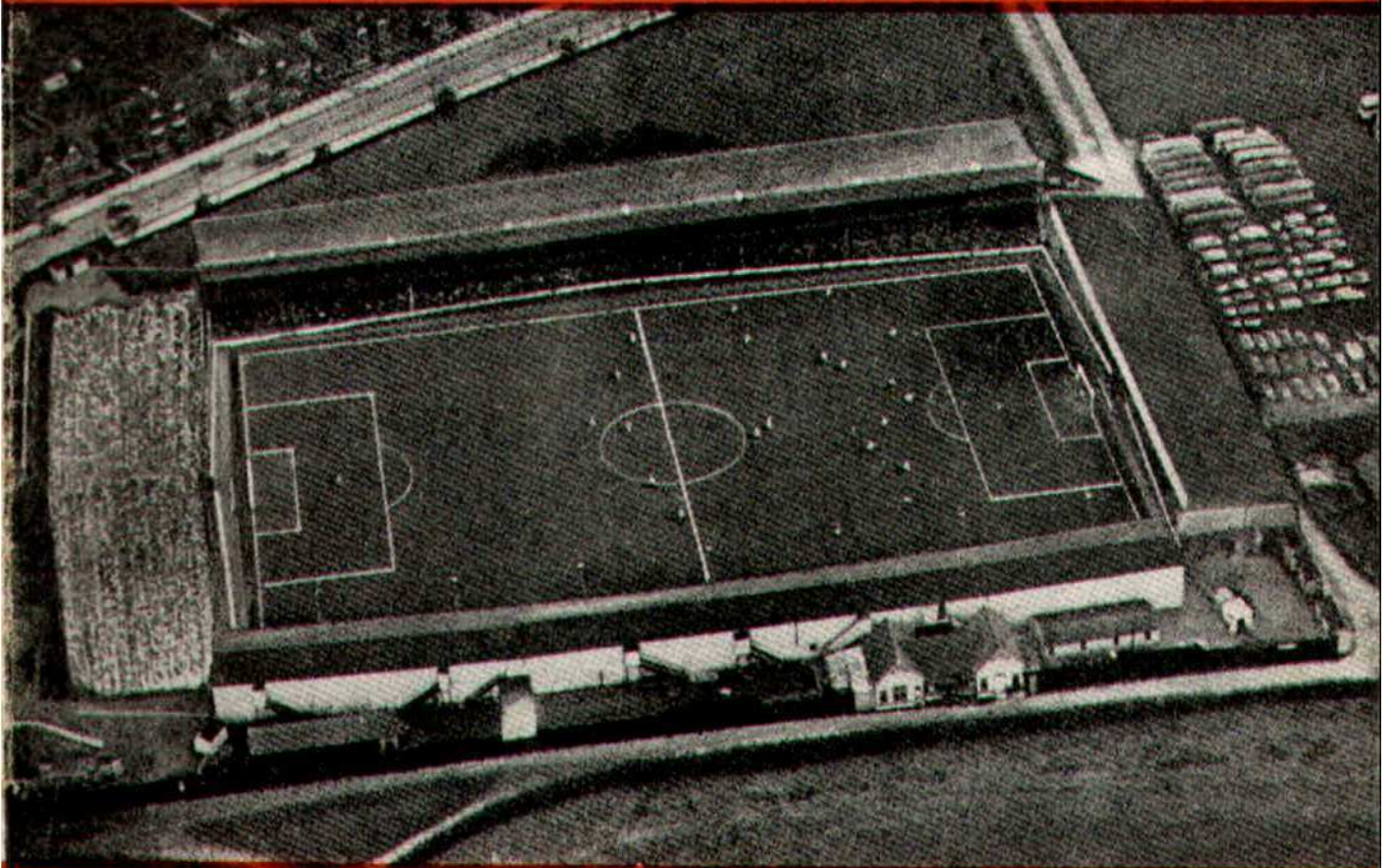




# SWINDON TOWN FOOTBALL CLUB



**SATURDAY, APRIL 22nd, 1961**

**DIVISION III**

**SWINDON TN. v. NOTTS C.**

**Kick-off 3 p.m.**

*Official Programme* **4d.**

**SOUTHERN LAUNDRY  
CO. LTD.**

*Launderers and Dry Cleaners*



TELEPHONE 4146  
STATION RD., SWINDON

GO MODERN — GO ELECTRIC  
for  
TELEVISION, RADIO AND  
DOMESTIC APPLIANCES

**D. ROBSON**

22 HAVELOCK STREET

6602 Swindon 6602

*Make your Goal the*

**EAGLE HOTEL**

(Prop.: Tom Hamilton)

WORTHINGTON :: GUINNESS  
DEVENISH BEERS :: BASS  
REGENT ST., SWINDON

**LITTLE & CO. LTD.**

The Name Linked with Service  
and Value

*The Popular Ladies' and Men's  
Complete Outfitters*



31-32 FLEET ST., SWINDON

Telephone 2831

**NEXT MATCH . . .**

WESSEX YOUTH LEAGUE

**SWINDON TN. v. WEYMOUTH**

MONDAY NEXT, APRIL 24th, 1961

Kick-off 7.30 p.m.

*Visit —*

**THE  
GRANADA CAFE**

60 CRICKLADE ROAD, SWINDON

Where good food  
is served at a  
reasonable price

**LEESE, ING & Co. Ltd.**

Incorporating BARKER & CO.

*Mineral Water and  
Squash Manufacturers*



**LANSDOWN RD., SWINDON**

TELEPHONE 2744/2320

**STADIUM SEATS**

SEND FOR OUR ILLUSTRATED BROCHURE

We can manufacture to suit your requirements

**MARTYN LYNshaw LIMITED, BOUNDARY WORKS,  
STRATTON ROAD, SWINDON**

# SWINDON TOWN FOOTBALL COMPANY LIMITED

Registered Office: COUNTY GROUND, SWINDON.



President: H. V. SLADE, Esq., O.B.E., J.P.

## Directors:

Mr. W. J. CASTLE (Chairman),

Mr. H. E. LANE (Vice-Chairman).

Mr. B. T. HAMILTON (Hon. Treasurer), Messrs. C. CHANDLER, J. DAVIES,

R. FRICKER, C. J. GREEN, F. PLYER, H. WILLIAMS and K. H. WILMER.

Manager: B. J. HEAD.

Secretary: R. A. MORSE.

---

**VOL. 11**

**SATURDAY, APRIL 22nd, 1961**

**No. 26**

---

## Club Notes

Two more very valuable points, and also a most entertaining game. Certainly it does not seem like the end of the season at the County Ground. Every home game almost a cup-tie, with wonderful support from the home crowd. We feel our spectators have been magnificent, really all the season, and especially during the last few weeks. They have given the lads 100 per cent encouragement, and how they have responded. No-one can ask more of them. They have run themselves to a standstill in their efforts. May they meet with the success they deserve. If only we could just get the run of the ball in front of

goal, the struggle would not be quite so difficult.

The attendance on Wednesday was most encouraging, and we do thank supporters for turning up on such a wet night. Many must have been caught in the heavy storm which occurred just after seven o'clock.

The weather affected the game slightly, because the ground, though very hard underneath, was very slippery on the top. Tumbles and slips were many, but fortunately none resulted in disaster, a goal being given away. One goal had to suffice, but what a splendidly taken opportunity, the way in which the scorer made quite sure.

BE A GOOD SPORT  
SHOP AT  
**Ron's Pet Stores**  
RODBOURNE ROAD and  
CRICKLADE ROAD

Poultry Foods - Fresh Dog Meat

**WATSON'S  
CENTRAL NEWSAGENCY**  
LTD.  
*Swindon's Leading Wholesaler*  
1 WELLINGTON STREET, SWINDON  
Tel. 2049

**M. J. REYNOLDS**  
GROCER  
152/154 CRICKLADE ROAD  
5479 SWINDON 5479  
COOKED HAM OUR SPECIALITY

**L. WOLLEN**  
WINES & SPIRITS  
\*  
373 Cricklade Rd., Swindon

### CLUB NOTES—continued

Today we play the second of our three home games. A win today will surely gain a high position in the league, well out of the relegation danger zone. No doubt our opponents Notts County will provide stern opposition (can it be harder than the last two home games?), as they have enjoyed a very good season, and until quite recently

were well in the promotion race. At the moment they occupy sixth position in the League Table having obtained 47 points from 43 games with 76 goals scored for and 74 against. Swindon are now placed in 17th position with 38 points from 43 games and 57 goals scored for and 53 against. Our goal average is excellent considering our position in the League. It could mean a point, should the bottom four positions be level.

FOR ALL YOUR ANGLING NEEDS  
CONSULT

**FRANK WOODWARD**  
Swindon's Fishing Tackle Specialist  
25 HAVELOCK ST., SWINDON  
PHONE 3879

**H. E. LANE**  
(REGENT STREET) LTD.  
*The Pork Sausage Specialists*  
117 Victoria Rd., Swindon  
Telephone: 2336

**ARE YOU GOOD ENOUGH**  
to join the  
**DUKE of EDINBURGH'S  
ROYAL REGIMENT?**

•  
*A fine career awaits you at*  
**ARMY INFORMATION OFFICE,**  
18 Faringdon Road, Swindon

## FIXTURES AND RESULTS TO DATE

### DIVISION III

<b>1960</b>			
Aug. 20	Halifax Tn. ....	H	1-1
22	Tranmere R. ....	A	2-2
27	Shrewsbury ....	A	1-1
31	Tranmere R. ....	H	1-0
Sept. 3	Walsall ....	H	1-0
6	Bristol C. ....	A	1-1
10	Bury ....	A	0-3
17	Chesterfield ....	H	2-0
20	Watford ....	A	0-1
24	Southend U. ....	A	2-0
28	Watford ....	H	1-2
Oct. 1	Port Vale ....	H	6-0
5	Torquay U. ....	A	1-1
8	Notts C. ....	A	0-1
12	Shrewsbury (Cup) ..	H	1-1
15	Bournemouth ....	H	0-1
19	Bristol C. ....	H	3-1
22	Bradford C. ....	A	1-2
29	Barnsley ....	H	P
Nov. 5	Bath City (Cup) ...	H	2-2
10	Bath City (Cup) ...	A	6-4
12	Colchester U. ....	H	0-2
19	Grimsby T. ....	A	0-0 A
26	Shrewsbury (Cup) ..	H	0-1
Dec. 3	Reading ....	A	1-1
10	Coventry C. ....	H	1-2
17	Halifax T. ....	A	1-1
24	Brentford ....	A	1-2
31	Shrewsbury ....	H	2-2
<b>1961</b>			
Jan. 7	(3) Brentford ....	H	1-1
14	Walsall ....	A	0-3 A
21	Bury ....	H	4-0
28	(4) Newport C. ....	A	0-2
Feb. 4	Chesterfield ....	A	1-1
11	Southend U. ....	H	1-1
18	(5) Port Vale ....	A	1-4
25	Reading ....	H	1-1
Mar. 4	(6) Bournem'th ....	A	1-2
11	Bradford C. ....	H	4-0
18	(G.F.) Barnsley ....	A	1-2
21	Walsall ....	A	1-2
25	Newport C. ....	H	2-0
31	Q.P.R. ....	A	1-3
Apr. 1	Colchester U. ....	A	1-3
3	Q.P.R. ....	H	1-0
8	Grimsby T. ....	H	3-0
12	Hull City ....	H	1-1
15	Hull C. ....	A	0-0
19	Barnsley ....	H	1-0
22	Notts C. ....	H	.....
26	Torquay U. ....	H	.....
29	Coventry C. ....	A	.....
May 6	(Final) .....	.....	.....

### FOOTBALL COMBINATION

<b>1960</b>			
24	Aldershot ....	A	2-4
27	Shrewsbury T. ....	H	3-0
Sept. 3	Millwall ....	A	3-4
7	Fulham ....	A	1-1
10	Southend U. ....	H	1-2
13	Brentford ....	A	0-2
24	Brentford ....	H	0-1
27	Northampton ....	A	0-0
Oct. 1	8 Mansfield T. ....	H	4-2
15	Reading ....	A	0-1
22	Swansea T. ....	H	1-1
29	Plymouth A. ....	A	0-0
Nov. 5	Crystal P. ....	H	P
12	Colchester U. ....	A	1-2
19	Notts C. ....	H	P
26	Coventry C. ....	A	P
Dec. 3	Luton Tn. ....	H	P
10	Mansfield T. ....	A	1-2
17	Northampton ....	H	1-3
24	Bristol R. ....	H	1-1
26	Bristol R. ....	A	0-6
31	Shrewsbury T. ....	A	1-3
<b>1961</b>			
Jan. 7	Peterborough U. ....	A	1-3
14	Millwall ....	H	3-3
21	Southend U. ....	A	1-3
28	Peterborough U. ...	H	0-2 A
Feb. 4	Fulham ....	H	0-5
18	Aldershot ....	H	0-0
25	Swansea Tn. ....	A	0-4
Mar. 4	Plymouth A. ....	H	2-0
11	Crystal P. ....	A	0-1
18	Colchester U. ....	H	1-0
22	Coventry C. ....	A	2-0
25	Notts C. ....	A	0-1
31	Q.P.R. ....	H	2-0
Apr. 1	Coventry C. ....	H	0-2
3	Q.P.R. ....	A	2-2
8	Luton T. ....	A	1-3
13	Notts C. ....	H	1-1
15	Reading ....	H	2-2
20	Luton T. ....	H	3-1
22	.....	.....	.....
29	Peterborough U. ....	H	.....
May 1	Crystal P. ....	H	.....

---

## Our Visitors

### NOTTS COUNTY F.C.

It is our pleasure to welcome the Directors, Officials and Players of Notts County F.C. to the County Ground this afternoon. The County gained promotion to the Third Division last season, when they finished as runners-up to Walsall in Division Four. This season they have been enjoying a very successful season in the League and at one time looked as though they might well gain promotion to Division II.

The last time the teams met at the County Ground, during season 1958-59, the result was a win for Swindon by 3 goals to 1. Our goals were scored by Edwards (2) and Micklewright.

Details of the Notts probable line-up is as follows:

		Ht.	Wt.	Previous Club	Born
George Smith	(G)	6. 0	12. 9	—	Nottingham
Richard Edwards	(B)	5.11	13. 2	—	Kirkley-in-Ashf'd
Harry Noon	(LB)	5. 9	10.10	—	Sutton-in-Ashf'd
John Sheridan	(RH)	5.11	11. 8	—	Ramsgate
Herbert Loxley	(CH)	6. 0	12. 7	—	Bonsall
Gerald Carver	(LH)	5. 7	10. 9	—	Birmingham
Donald Roby	(OR)	5. 6	10. 5	—	Wigan
Roy Horobin	(IR)	5. 8	10.10	West Brom.	Brownhills
Tony Hateley	(CF)	6. 1	12. 7	—	Derby
John Forrest	(IL)	5.10	11. 4	Leeds U.	Rossington
Chris Joyce	(OL)	5. 8	10. 9	Notts. F.	Dumbarton

Notts County play at Meadow Lane, Nottingham. The record attendance at the ground is 49,000 against Nottingham Forest in the Football League on 22nd April, 1950. The record receipts of £6,425 was recorded on 12th March, 1955 for the F.A. Cup match against York City.

---

## **C. Dunn & Son**

BUILDERS & DECORATORS  
Alterations, Renovations, Conversions  
Plumbers and Sanitary Engineers  
503 CRICKLADE ROAD Tel. 2522

## **NOTTON'S CAFE**

COUNTY ROAD  
*200 yards from Ground*  
**RIGHT ON THE BALL**

---

## **County Ground Hotel**

(Adjoining Football Ground)  
FULLY LICENSED  
**ARKELL'S ALES at THEIR BEST**  
Mine Host—Mr. Geo. Baillie

AT THE COUNTY GROUND TODAY—

## **WISES CATERING SERVICE**

SWINDON'S LEADING OUTSIDE CATERERS  
and for all your Special Events  
55 GODDARD AVE. Phone 5562

---

## **THE FOOTBALL ASSOCIATION DIARY** FOR SEASON 1961-62

will be ready during JULY-AUGUST

Price 4/- per copy

The Diary will contain the Football League fixtures as usual  
and will be available from:-

The Football Association,  
22 Lancaster Gate, London, W.2.

---

## **GODDARD & Co.**

*Wholesale and Retail*

WINE, SPIRIT, BEER  
AND CIDER MERCHANTS



9 REGENT STREET, SWINDON  
Telephone 2415



Also at  
4 WINGATE PARADE, SWINDON

We are your MAIN DEALER for  
**VAUXHALL** and **JAGUAR** cars  
**BEDFORD** Vans and Trucks  
Etc.

Any make of Car or Truck  
supplied - Used Vehicles a  
specialised part of our  
business.



## **SKURRAY'S** **SWINDON**

Telephone: 2266

# STRANGE'S GARAGE

Austin Dealers in Cars and Light Vans  
Agents for Vespa Scooters  
Second-hand Cars Bought and Sold

**WOOTTON BASSETT**

Telephone 216

# Swindon Bacon Curing Co. Ltd.

*Specialists in  
Bacon, Pork & Cooked Ham*

**50 FLEET STREET  
SWINDON**

Telephone: 2122

# WARNES (Swindon) Ltd.

ELECTRICAL CONTRACTORS  
RADIO AND TELEVISION

Contractors to:  
SWINDON TOWN FOOTBALL CLUB

\* \* \*

51/52 COMMERCIAL RD., SWINDON  
Phone 6486/6694

160 COUNTY RD., SWINDON  
Phone 6346/7

9 SWINDON ST., HIGHWORTH  
Phone 379

## HALF-DAY EXCURSION BOOKINGS

Every Wednesday  
to

**LONDON  
12/3**

from SWINDON JUNCTION  
Depart 2.32 p.m. and 4.5 p.m.

(Refreshment Car Trains)

Return from Paddington 6.35, 8.5,  
8.55, 9.25, 10.30, 11.50 p.m. the  
same day, or 1.0 (night).

**BRITISH RAILWAYS**

Western Region

# MILLS & MERI

H  
O  
U  
S  
E  
F  
U  
R  
N  
I  
S  
H  
E  
R  
S

SWINDON TOWN v. NOTTS COUNTY

SWINDON T

RIGHT WING

Colours: RED SHIRTS, 1

Burton

Jones, K. (2)

Morgan (4)

Owen (

Corbett (7) Hunt (8) Summerbee (9)

Referee:

Mr. J. K. Taylor  
(Wolverhampton)



Joyce (11) Forrest (10) Hateley (

Carver (6)

Loxley (5

Noon (3)

Smith

NOTTS COUN

LEFT WING

These teams are subject

**16-17 BRIDGE ST. S**

# W. B. CARTER

Newsagent, Tobacconist and Confectioner

Large selection of Boxes of Chocolates  
always in stock

CORONA, TIZER, DRINKS, Etc.

Agents for Wall's Ice Cream

188/190 FERNDAL RD., SWINDON

Telephone: 3089

# Blunsdon Abbey Caravans Ltd.

N.C.C. Approved Trader

TRY CONSULTING US

FOR

SALE, SITES & SERVICE

A Home of your own in a few years  
and no Landlord

Tel. Blunsdon 281

For Our Information Service



*"Keep that Team spirit"*  
**JOINT TERRITORIAL  
 THE ARMY**

Units in WILTSHIRE  
 still need recruits

Apply for details by letter or by  
 phone or in person at your local  
 Drill Hall

**THE PLESSEY COMPANY  
 Ltd.**

After years of achievement have great  
 expansion plans for the future.

**TECHNICAL STAFF  
 CLERICAL STAFF  
 MANUAL WORKERS**

are essential for this progress.

Interested persons please apply to the  
 Personnel Department.

**FERRICKS LTD.**

U  
P  
H  
O  
L  
S  
T  
E  
R  
E  
R  
S  
•  
R  
E  
M  
O  
V  
A  
L  
S

COUNTY. Kick-off 3 p.m.

SWINDON TOWN LEFT WING  
 SHIRTS, WHITE SHORTS  
 Burton

Trollope (3)  
 Owen (5) Bell (6)  
 Bee (9) Woodruff (10) Jones, F. (11)



Linesmen:

*Red Flag*—  
 Mr. A. Rees  
 (Mountain Ash)

*Yellow Flag*—  
 Mr. D. Milverton  
 (Radstock)

Steele (9) Horobin (8) Roby (7)  
 Oxley (5) Sheridan (4)  
 Edwards (2)

Smith  
 SWINDON COUNTY RIGHT WING  
 are subject to alteration

**T. SWINDON** PHONE 5365

INSIST ON

**Garrard  
 EQUIPMENT**



For Superb Tape and Record Playing



Fitted by the World's leading  
 manufacturers.

**Haskins Garage**

Sales : WROUGHTON : Service  
 263

AUSTIN MORRIS  
 LAND ROVER ROVER

SWINDON'S NEW SNACK  
 AND GRILL BAR

**HARLEQUIN**

90 VICTORIA ROAD, SWINDON  
 Open Daily 8.30 a.m. - 9.0 p.m.  
 The Best Draw Home or Away!

"DO IT YOURSELF"

**BAYNES (SWINDON)  
 TIMBER Co. Ltd.**

County Works, County Road, Swindon  
 Tel. 4112/3

"THE PERFECT CENTRE"

for all "do-it-yourself" enthusiasts.  
 Call, write, phone your requirements:  
 Hardwoods, softwoods, moulding, ply-  
 wood, Formica and Perstorp, etc., all  
 cut to your given sizes.

"IF WE HAVEN'T GOT IT — WE'LL GET IT!"  
 Comprehensive catalogue sent on request  
 One minute from the Ground

ONE QUALITY ONLY --- THE BEST!

FRESH SUPPLIES DAILY

*York Road Fisheries*

SWINDON

WET, DRY or FRIED Tel.: 3680

**DEMPSTER ENTERPRISES**, offer a modern fleet of 4 and 6 seater self-drive hire cars, for your pleasure and convenience. For advance bookings apply:-

**Dempster Enterprises**

4 MILTON ROAD, SWINDON

Tel. 6603

Rent your T.V. - Washing Machines  
Spin Dryers - Electrical Installations  
from

**D. V. HOLLAMBY LTD.**

138 High St., Wootton Bassett, Wilts.

Telephone 295

ALL LEADING MAKES IN STOCK

**Howard Autos**, Swindon's Main Cotton Motor Cycle distributors always have a good selection of guaranteed used cars for you to choose from.

**HOWARD AUTOS**

3 WELLINGTON ST., SWINDON

Tel. 6603

### STAND TICKETS

Tickets for seats in the Old and New Stands may be booked in advance. Postal applications should be accompanied by a remittance and stamped addressed envelope. Tickets ordered by telephone must be collected not later than 12 noon on the day of the match, otherwise they will not be reserved.

Prices for League Matches:—

**New Stand**—Block C—6/- (Centre)

Blocks B and D—5/- (Side Stands)

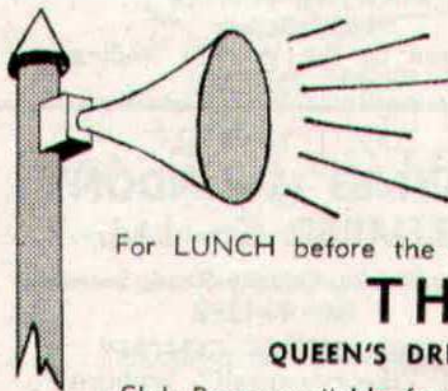
Blocks A and E—3/6 (Wing Stands)

**Old Stand**—Centre Box—7/6

Block H—5/- (Centre)

Blocks F, G and I—3/6 (Side Stands)

Postal applications to—Secretary, Swindon Town F.C., County Ground, Swindon, Wilts. Telephone Swindon 2118.



**A SPECIAL  
MESSAGE**

For LUNCH before the match—or a SNACK afterwards, visit

**THE BULLDOG**

QUEEN'S DRIVE, WALCOT ESTATE — Tel. 6877

Club Room available for meetings, private parties, wedding receptions, etc.

A SIMONDS TAVERN

---

## **Supporters' Club**

### **Notes**

The Annual Dinner of our Club is to be held this evening. The proceedings in the past have always proved to be much more enjoyable if the team has been able to record a win the afternoon. We trust that the players today will be able to say that they have contributed to a successful social function.

The collection at half-time today will be devoted to the benefit fund for F. Thompson. This player has given very loyal service to the Club, in whatever position he has been called upon to play, and in whichever team he has appeared.

Supporters will remember that he appeared quite frequently in the first team until he entered on his National Service, since when he has played, when available, mainly in the Combination team.

His enthusiasm for the game leads us to think that we shall see more of him in the first team when it is possible to call upon his services regularly.

We appeal, with confidence, for a generous response to our appeal today on his behalf.

A year ago we announced that we hoped to produce a Handbook at the beginning of the present season, similar to those which proved popular several years ago. For various reasons, however, we could not undertake the work ourselves, and arranged for it to be done by an agency specialising in these books.

Unfortunately, they were supplied much later than we had hoped, and, when they arrived, they were not of the standard we had anticipated. Much of the information and many of the photographs were obsolete, and consequently we felt that it would be improper to offer them for sale at the full price.

Some supporters, however, especially the boys, have shown some interest in them, and we are therefore selling them off at sixpence each to any who may require them. Please enquire at our office.

Holders of lucky programmes on 19th April were: Nos. 333 and 1111—not claimed.

---

## KEY OF THE BOARD

Half-time scores will be given in two sections. First Section indicated by **|1|**. Second Section indicated by **|2|**.

### FIRST SECTION

- A—Arsenal v. Wolverhampton
- B—Birmingham v. Blackpool
- C—Burnley v. Tottenham H.
- D—Manchester C. v. Aston Villa
- E—Newcastle v. Bolton
- F—Nottingham F. v. Leicester
- G—Preston N.E. v. Manchester U.
- H—Sheffield W. v. Everton
- I—West Brom A. v. Chelsea
- J—Bristol R. v. Sheffield U.
- K—Derby v. Charlton
- L—Ipswich v. Sunderland
- M—Leeds v. Lincoln
- N—Middlesbrough v. Portsmouth
- O—Rotherham v. Swansea
- P—Southampton v. Luton
- Q—Bury v. Hull C.
- R—Halifax v. Newport C.
- S—Torquay v. Queen's Park R.
- T—Walsall v. Grimsby

### SECOND SECTION

- A—Watford v. Bradford C.
- B—Accrington v. Southport
- C—Aldershot v. Carlisle
- D—Bradford v. Mansfield
- E—Chester v. Doncaster
- F—Crewe v. Crystal P.
- G—Gillingham v. Stockport
- H—Northampton v. Rochdale
- I—Oldham v. Wrexham
- J—Workington v. Hartlepoons
- K—York C. v. Darlington

The Rendezvous of all Sportsmen . . .

## THE CROWN INN

(Host: Frank Plyer)

Arkell's Best Ales : Fully Licensed  
Snacks, etc.

STRATTON ST. MARGARET Tel. 2339

"SUPPORT YOUR HOME"

## CIVIL DEFENCE

plays a vital part in saving lives

Particulars:

CIVIC OFFICES, SWINDON

**WIN OR LOSE!**

THE FOOD IN THE

## China Restaurant

IS BEST

107 COMMERCIAL ROAD

SWINDON 6888

Open Daily 12.0 a.m. - 11.30 p.m.  
For all Chinese and English Dishes

**SPECTATORS ARE REQUESTED  
NOT TO CROSS THE PLAYING  
PITCH AT THE END OF  
THE GAME**

## COATE GARAGE



THE ALCOHOL FUEL

REPAIRS  
SERVICING  
TYRES

★

OVERHAULS  
REBORING  
WELDING

Props.: E. V. & W. H. Mattick  
MARLBOROUGH ROAD, SWINDON

For something a little different, try

## DON JONES

HIGH CLASS CONFECTIONER  
AND TOBACCONIST

Always a good selection of  
SUCHARDS' - TOBLER  
TERRY'S

Quality Chccolates and Presentation  
Boxes

112 COMMERCIAL ROAD

6012 SWINDON 6012

*Typewriters*  
from £10

FULLY GUARANTEED

**DOBELL SHEARMAN  
& CO. LTD.**

26 HIGH ST. & 33 FARINGDON RD.,  
SWINDON Telephone 2312

Only 800 yards to your Dream Car —  
**NEW ALPHA MOTOR Co.**  
(SWINDON) LTD.

**QUEENS DRIVE, SWINDON**

Tel. 5062/63

For Top Quality Used Cars at the  
Lowest Prices

Open 7 days per week from 7 a.m. to 10.30 p.m.

### DIVISION III

	P.	W.	D.	L.	F.	A.	Pts.
Bury .....	42	27	7	8	102	45	61
Walsall .....	43	26	5	12	92	56	57
Queen's Park Rangers .....	42	23	9	10	83	54	55
Watford .....	43	19	11	13	79	68	49
Grimsby Town .....	42	19	10	13	73	63	48
Notts County .....	43	19	9	15	76	74	47
Port Vale .....	43	17	12	14	93	75	46
Barnsley .....	42	20	6	16	75	70	46
Hull City .....	43	17	11	15	70	66	45
Torquay Utd. ....	42	14	17	11	72	68	45
Halifax Town .....	42	14	16	12	66	73	44
Newport County .....	42	16	10	16	77	82	42
Shrewsbury Tn. ....	41	14	14	13	72	66	42
Bristol City .....	43	16	9	18	65	65	41
Brentford .....	43	12	15	16	52	64	39
Coventry City .....	43	14	11	18	73	75	39
<b>SWINDON TOWN</b> .....	<b>43</b>	<b>12</b>	<b>14</b>	<b>17</b>	<b>57</b>	<b>53</b>	<b>38</b>
Southend United .....	43	13	11	19	56	71	37
Bournemouth .....	43	14	9	20	54	72	37
Reading .....	42	12	11	19	61	77	35
Tranmere Rovers .....	43	14	7	22	75	109	35
Bradford City .....	42	10	12	20	58	81	32
Chesterfield .....	43	10	10	23	60	80	30
Colchester Utd. ....	43	10	10	23	59	92	30

### Chappell's Funeral Service

(Fun. Dir. : A. A. Winchcombe)

196 COUNTY ROAD  
SWINDON

24-hour Service

Tel. 6073

*Don't buy a Car, Motor Cycle or Scooter  
until you have seen the wide selection we  
have to offer at*

### CORONATION CAR SALES

67/68 VICTORIA ROAD

Telephone: 6106

---

**SEA VIEW HOLIDAY  
CAMP**

YOUR HOST—Mr. BENNETT

✦  
**WYKE REGIS - WEYMOUTH  
Dorset**

"COAL!"  
"COAL!"  
"COAL!"

**J. WILMER**

ST. MARGARET'S ROAD, SWINDON

Telephone 22535

---

MEET YOUR FRIENDS AT THE

***Southbrook Inn***

(Hosts: Mr. and Mrs. Jack Scutts)

FULLY LICENSED  
CLINCH BEERS, ETC.

**SOUTHBROOK STREET, SWINDON**  
Tel.: 5837

**STOP ! LOOK !**

**NU-HOMES**

For all Household Fitments

Paints - Emulsions - Wallpapers  
Kitchen Units and Bathroom Suites,  
etc.

**176a Manchester Road**  
TELEPHONE 2178

---

**FORTHCOMING MATCH . . .**

DIVISION III

**SWINDON T. v. TORQUAY U.**

**WEDNESDAY NEXT, APRIL 26th, 1961**

**Kick-off 7.30 p.m.**

---

**TO ALL LOCAL SPORTS  
CLUBS**

•  
It is quicker and cheaper  
to WASH and DRY your  
Football Clothes at

**The Launderettes**

at  
**59 WELLINGTON STREET**

or  
**186 VICTORIA ROAD  
SWINDON**

*For High Class  
Central Heating, Plumbing  
Painting and Decorating  
Electrical Installations  
and Repairs*

✦  
**NORTH WILTS**

Sanitary & Heating  
Co. Ltd.

**NEWPORT ST., SWINDON**

'Phone: 4201

---

Always at your service

**L. BIBBY**

For all Types, Rags, Iron and Metal,  
etc. Spot Cash Paid. Please Telephone  
2101 and our van will call.

THE PADDOCK, ERMIN STREET  
STRATTON ST. MARGARET

**Walcot Greengrocer**

G. E. STAMMERS

✽

**1 SUSSEX SQUARE  
SWINDON**

SWINDON **2526**

*CAN ALSO BE YOUR LUCKY NUMBER ! ! !*

*if you ring*

**HOLMES & LUCAS**

14A REGENT STREET :: SWINDON

*for all your*

**TELEVISION, RADIO AND ELECTRICAL REQUIREMENTS**

**LUCKY PROGRAMME**

Please retain your programme. An announcement will be made at half-time of two numbers and the holders will be given a stand seat at the next Division III game. The persons who purchased the programmes bearing the winning numbers should call at the office after the game and claim their seats.

**3128**

**FRIED FISH AND CHIPS**

Always Fresh - Always Hot

**WALCOT FISHERIES**  
**Sussex Square**

Wet fish and frozen foods all refrigerated display.

Telephone Swindon 2731

6 REGENT CIRCUS (NEAR G.P.O.)

OR FOR YOUR FOOTBALL OUTINGS  
BOOK YOUR COACH FOR PRIVATE PARTIES  
Main Booking Agents for Millers Coaches  
Agents for Wessex School of Motoring  
Newsagents : Confectionists :  
A. J. D. WOODHOUSE & A. SMITH

**HATTON'S NEWSAGENCY**

For Insurance or Hire Purchase

CARS - CARAVANS - MOTOR CYCLES, etc.

Consult

**D. & H. HENTY LTD.**

54 COMMERCIAL RD., SWINDON  
SWINDON 5258

**PANKHURST**

**The Palace, Gorse Hill,  
Swindon.**

MOTOR CYCLE - SCOOTER AND  
THREE-WHEELER SPECIALISTS

Open Mon. to Sat. 9 a.m. - 8 p.m. Phone 5466

To be well shod—

is to be well dressed

**Victoria Shoe Repairs**

129 VICTORIA ROAD, SWINDON

First class materials and workmanship

**Maylott Studios**

For GROUP & SPORT Photographs

OFFICIAL PHOTOGRAPHER TO  
SWINDON TOWN FOOTBALL CLUB

**31 FARINGDON RD. Tel. 2792**